

Typography Worksheet 1

Oldstyle

Find **4 different** examples of Oldstyle in your magazines and paste them below..

On your pasted samples find one example of each of the nine terms listed below. Circle the part that illustrates the term and then draw a line from it to the term. You may need to draw in lines to illustrate the term on the sample: i.e. drawing in the baseline or cap height. Cross-out any term that is not present in your samples.

serif

thick

thin

stress

Paste your biggest sample here.

descender

ascender

baseline

cap height

x-height

Sans Serif

Find **4 different** examples of Sans Serif in your magazine and paste them below...

On your pasted samples find one example of each of the nine terms listed below. Circle the part that illustrates the term and then draw a line from it to the term. You may need to draw in lines to illustrate the term on the sample: i.e. drawing in the baseline or cap height. Cross-out any term that is not present in your samples.

serif

thick

thin

stress

descender

Paste your biggest sample here.

ascender

baseline

cap height

x-height

Find **one** example of each of these in your magazine and paste them below...

Modern

Slab Serif

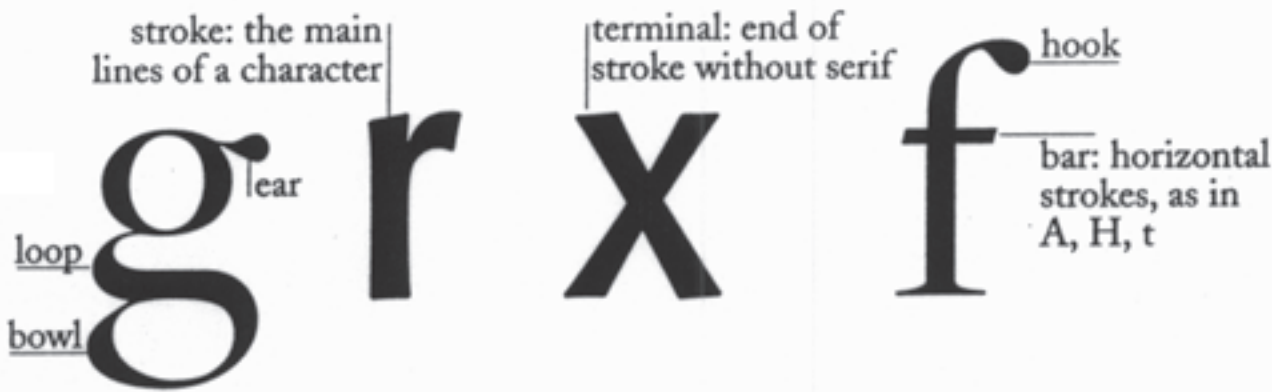
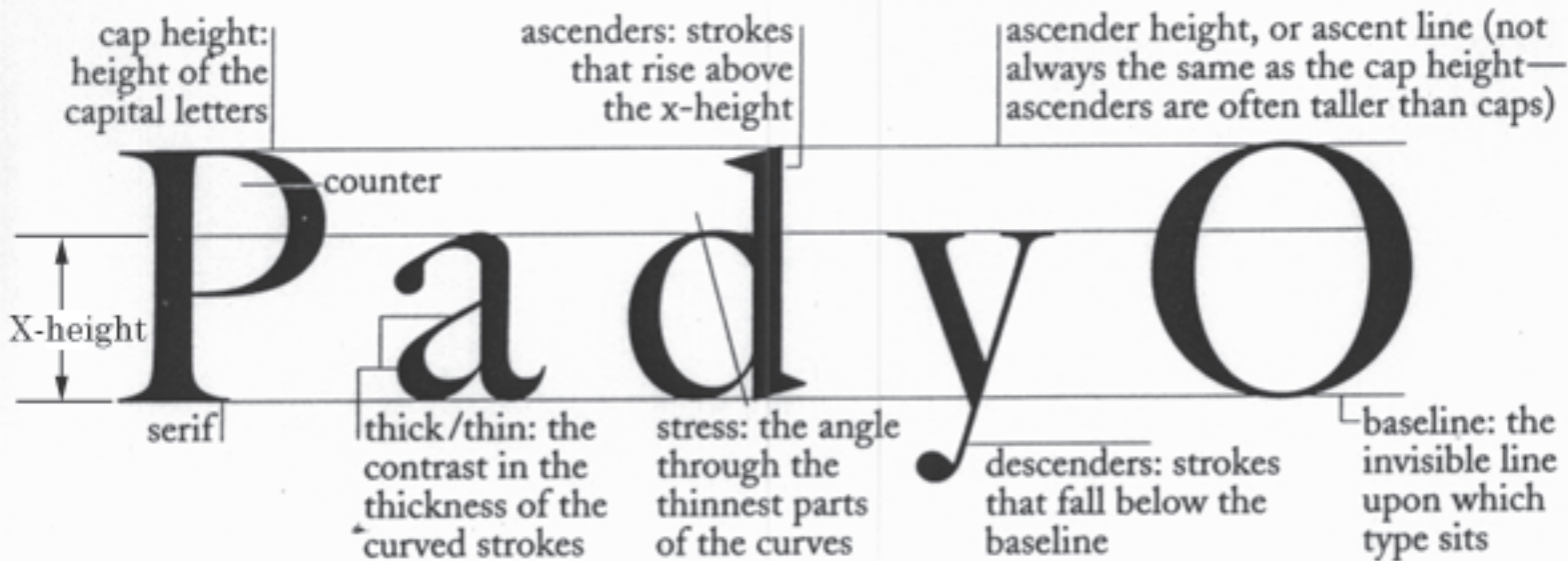
Script

DECORATIVE

Grunge

Pictographic ☆ ✱ ✱ ▼ ◻ ✱ ◻ ✱ ◻ ✱ ✱ ✱

Anatomy of Type



aa ff gg hh

aa ff gg hh

Notice how the serif letter **a** turns from a “two-story” **a** into a “one-story” **a** when it is italic, but the sans serif does not.

body copy: text in sizes from about 8 to 12 set in paragraphs, as shown directly below.

Roman means the type does not slant.

Italic type, which does slant, has been completely redesigned, as you can see by these comparisons of the roman and italic versions of the same typeface. Most serif faces have true italic versions.

Oblique means the type is just slanted; this style is typical of sans serif faces (but not all).

Diagonal stress

Serif
(pronounced "sair iff" not "suh reef")

Oldstyle

Serifs on lowercase letters are slanted

Goudy

Moderate thick/thin transition in the strokes

Goudy Palatino Times

Baskerville Garamond

Serifs on lowercase letters are horizontal and thick (slabs)

Vertical stress

Slab serif

Clarendon

Very little or no thick/thin transition, or contrast, in the strokes

Clarendon Memphis

Memphis Extra Bold

New Century Schoolbook

Vertical stress

Serifs on lowercase letters are thin and horizontal

Modern

Bodoni Poster Compressed

Radical thick/thin transition in the strokes

Bodoni Times Bold

Fenice, Ultra Walbaum

No serifs anywhere

No stress because there's no thick/thin

Sans serif

Franklin Gothic

No thick/thin transition in the strokes

Antique Olive Formata

Gill Sans Franklin Gothic

Folio Syntax